

COVID19 ACTIVITY REPORT

Report Date : 2020-Nov-03rd, Tuesday

Report Period: 2020-Jan-01st to 2020-Nov-02nd

Executive Summary

During the 1st week of January 2020, Uganda Virus Research Institute started testing samples for COVID-19. Samples are received at UVRI with Case Report Forms that capture demographic and symptom data. These data are entered in the UVRI data management system that was developed specifically for this.

As of 02nd November, a total of **228,643** forms have been entered. **51.8%** of these cases are from Community samples while **48.2%** are from POEs.

4,576 samples were tested in Week 44 with **97%** being Community samples while **3%** were POE samples.

Table 1: Source, demographics, and sample type

	Gender		Sample Type	
	Female, N = 40,980 ¹	Male, N = 187,614 ¹	Baseline, N = 214,815 ¹	Follow Up, N = 14,399 ¹
Sample Source				
Community	35225 (86%)	83177 (44%)	106085 (49%)	12741 (88%)
POE	5755 (14%)	104437 (56%)	108730 (51%)	1658 (12%)
Age Grouping				
0-9	2033 (5.1%)	3080 (1.7%)	4388 (2.1%)	735 (5.2%)
10-19	3944 (9.9%)	6396 (3.5%)	9096 (4.4%)	1260 (9.0%)
20-35	20487 (51%)	71024 (39%)	84933 (41%)	6699 (48%)
36-50	9871 (25%)	74894 (42%)	80773 (39%)	4080 (29%)
50+	3562 (8.9%)	24834 (14%)	27113 (13%)	1303 (9.3%)
Unknown	1083	7386	8512	322
Origin				
Border States	2078 (5.1%)	52434 (28%)	53729 (25%)	784 (5.4%)
Other Nationalities	5619 (14%)	40883 (22%)	45388 (21%)	1307 (9.1%)
Ugandans	33283 (81%)	94297 (50%)	115698 (54%)	12308 (85%)

¹Statistics presented: n (%)

Fig 1: Total Entries

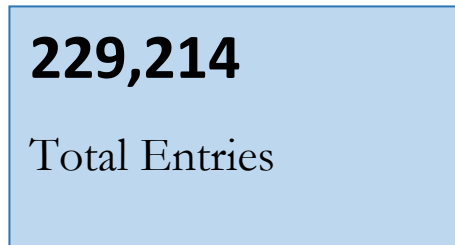


Fig 2: Entries in the last 7 days

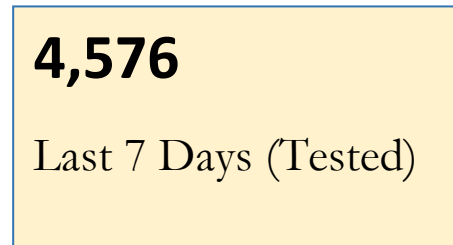


Fig 3: Symptomatic Cases

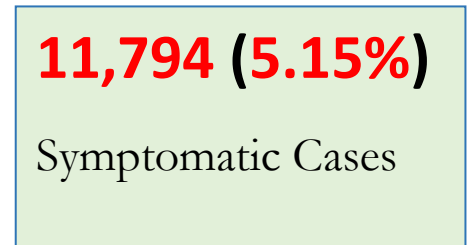


Fig 4: Number of Samples Received at Uganda Virus Research Institute, October 2020. (Last 7 Days, N= 3,264)

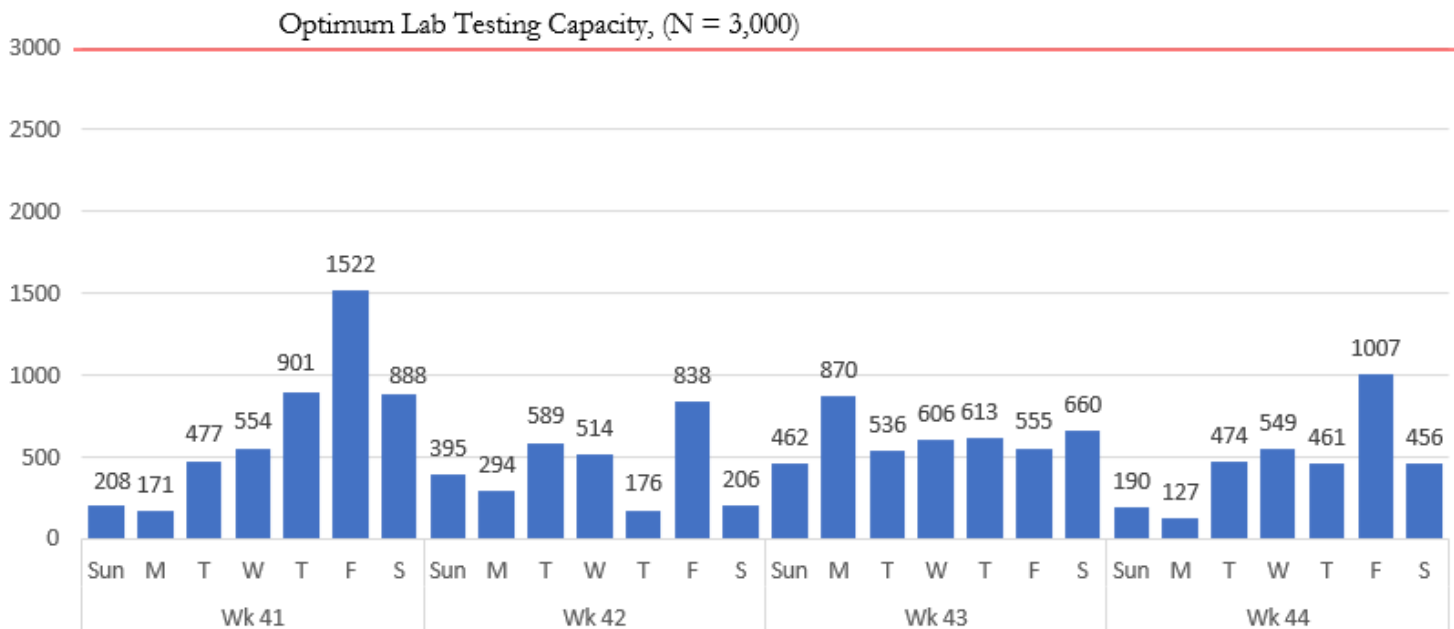


Fig 5: Age-Gender disaggregation – All Sources

Fig 6: Age-Gender disaggregation - Community

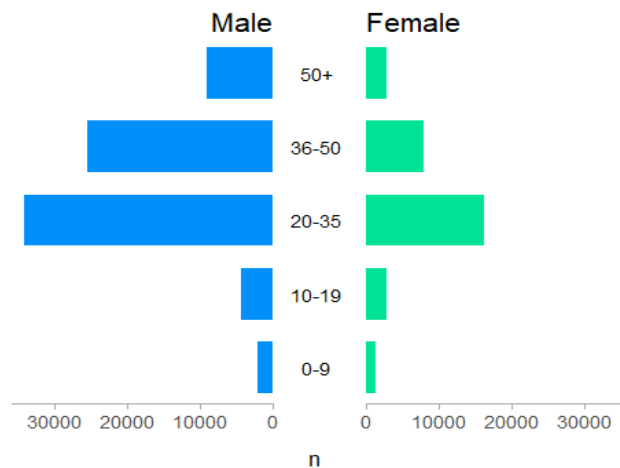
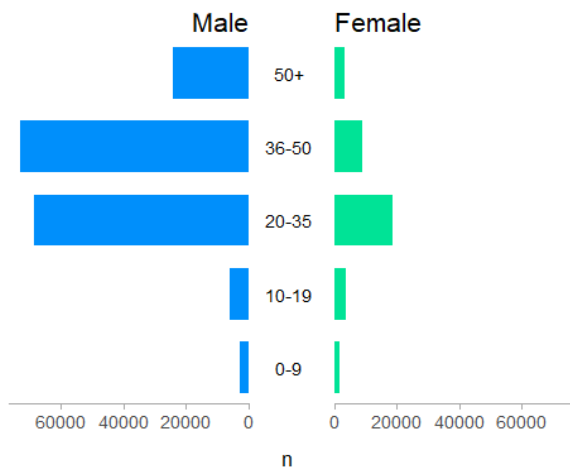


Fig 6: Sample source

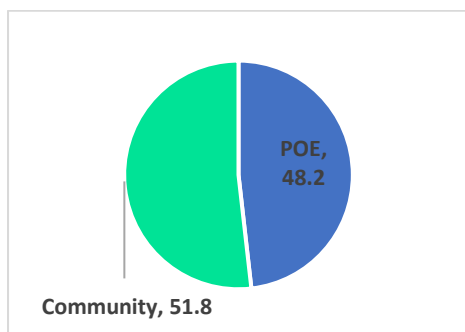


Fig 7: Gender distribution

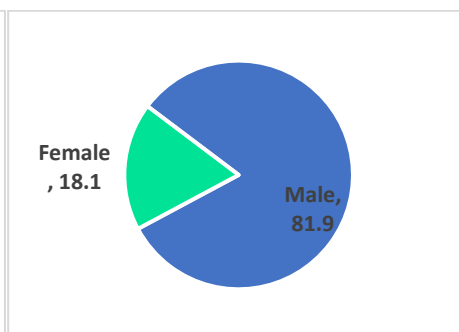


Fig 8: Gender distribution in Community

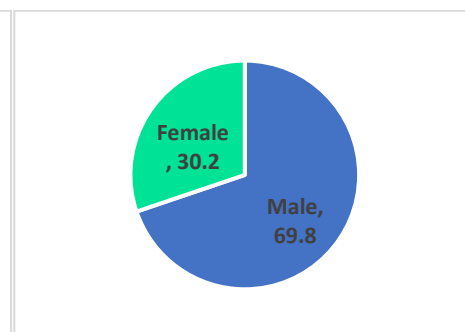


Table 2: Number of samples received at UVRI on a weekly basis

<i>Week (2020)</i>	Number of Samples Received
44	3,264
43	4,302
42	3,012
41	4,721
40	5,320
39	7,466
38	9,212
37	10,410
36	12,478
35	15,415
33	3,360
32	12,367
31	11,564
30	6,998
29	10,216
28	9,597
27	10,803
26	13,480
25	5,157
24	27,000