

## COVID19 ACTIVITY REPORT

**Report Date :** 2020-Dec-20<sup>th</sup>, Tuesday

**Report Period:** 2020-Jan-01<sup>st</sup> to 2020-Dec-18<sup>th</sup>

### Executive Summary

During the 1<sup>st</sup> week of January 2020, Uganda Virus Research Institute started testing samples for COVID-19. Samples are received at UVRI with Case Report Forms that capture demographic and symptom data. These data are entered in the UVRI data management system that was developed specifically for this.

As of 20<sup>th</sup> December, a total of **258,472** forms have been entered. **56.3%** of these cases are from Community samples while **43.7%** are from POEs.

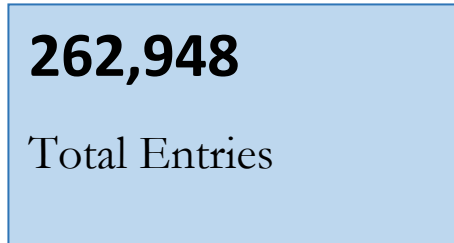
**9,870** samples were tested in Week **50** with **99.5%** being Community samples while **0.5%** were POE samples.

**Table 1:** Source, demographics, and sample type

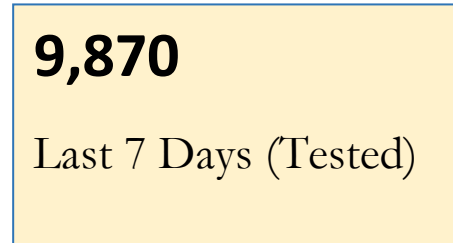
	Gender		Sample Type	
	Female, N = 50,871 <sup>1</sup>	Male, N = 206,981 <sup>1</sup>	Baseline, N = 242,646 <sup>1</sup>	Follow Up, N = 15,826 <sup>1</sup>
<b>Sample Source</b>				
Community	44690 (88%)	100312 (48%)	131288 (54%)	14138 (89%)
POE	6181 (12%)	106669 (52%)	111358 (46%)	1688 (11%)
<b>Age Grouping</b>				
0-9	2443 (4.9%)	3654 (1.8%)	5312 (2.3%)	795 (5.1%)
10-19	4896 (9.9%)	7716 (3.9%)	11257 (4.8%)	1371 (8.9%)
20-35	25143 (51%)	79132 (40%)	97022 (42%)	7374 (48%)
36-50	12400 (25%)	81012 (41%)	89038 (38%)	4462 (29%)
50+	4660 (9.4%)	27488 (14%)	30701 (13%)	1467 (9.5%)
Unknown	1329	7979	9316	357
<b>Origin</b>				
Border States	2293 (4.5%)	53759 (26%)	55254 (23%)	799 (5.0%)
Other Nationalities	5845 (11%)	41793 (20%)	46481 (19%)	1350 (8.5%)
Ugandans	42733 (84%)	111429 (54%)	140911 (58%)	13677 (86%)

<sup>1</sup>Statistics presented: n (%)

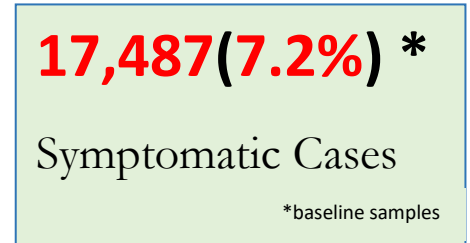
**Fig 1: Total Entries**



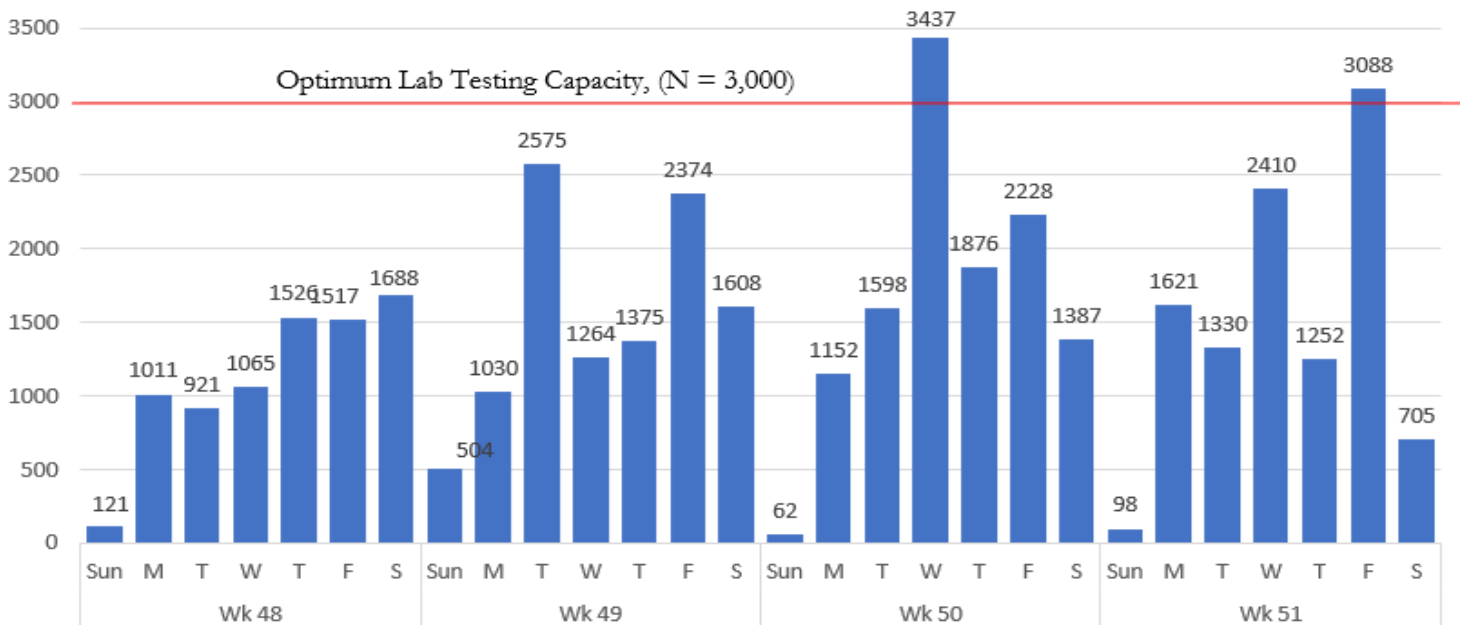
**Fig 2: Tested in the last 7 days**



**Fig 3: Symptomatic Cases**

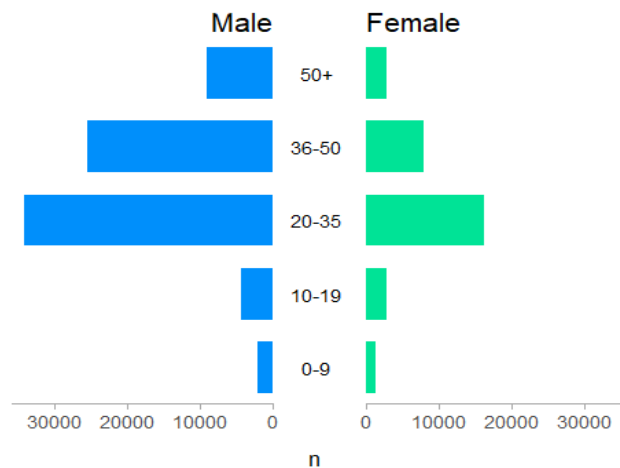
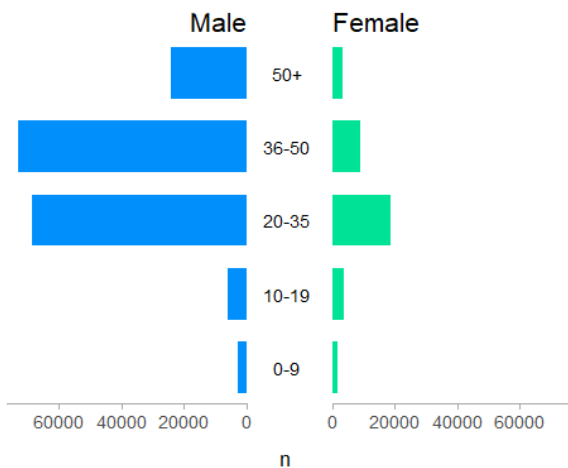


**Fig 4: Number of Samples Received at Uganda Virus Research Institute, October 2020. (Last 7 Days, N= 10,504)**

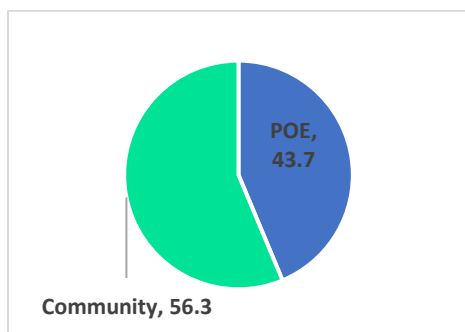


**Fig 5: Age-Gender disaggregation – All Sources**

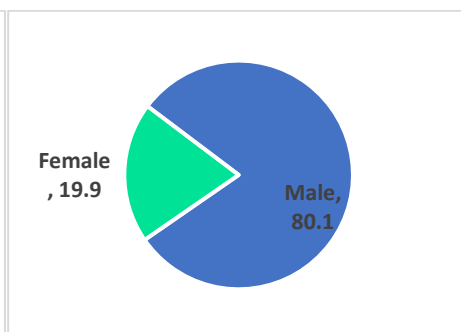
**Fig 6: Age-Gender disaggregation - Community**



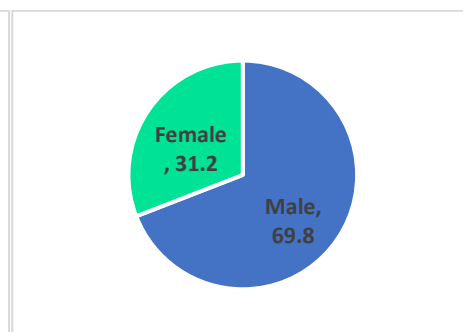
**Fig 6:** Sample source



**Fig 7:** Gender distribution



**Fig 8:** Gender distribution in Community



**Table 2:** Number of samples received at UVRI on a weekly basis

Week (2020)	Number of Samples Received
51	10,504
50	11,740
49	10,730
48	7,849
47	4,690
46	6,472
45	4,074
44	3,264
43	4,302
42	3,012
41	4,721
40	5,320
39	7,466
38	9,212
37	10,410
36	12,478
35	15,415
33	3,360
32	12,367
31	11,564
30	6,998
29	10,216
28	9,597
27	10,803
26	13,480
25	5,157